



## NEWS RELEASE

August 5, 2020

For all media outlets

KPMG Consulting Co., Ltd.  
Japan Weather Association

# **KPMG Consulting and Japan Weather Association collaborate on providing comprehensive consulting services for climate change mitigation and adaptation**

**— Supporting business plans and risk management systems of companies  
through advanced predictive analysis —**

KPMG Consulting Co., Ltd. (Headquarters: Chiyoda-ku, Tokyo, President: Masahiro Miyahara, hereinafter “KPMG Consulting”) and Japan Weather Association (Headquarters: Toshima-ku, Tokyo, Chairman: Futoshi Osada, hereinafter “Japan Weather Association”) will collaborate to provide comprehensive consulting services based on advanced predictive analysis for both “mitigation” that curbs greenhouse gas emissions that cause climate change and “adaptation” that aims to mitigate the risks of climate change.

In recent years, the number of disasters caused by abnormal weather such as large typhoons and local heavy rains have increased in Japan, and the impact of weather on the society as well as the economy is increasing. In business activities as well, there are numerous actual damages due to these disasters such as damages to infrastructure and important assets, long-term stagnation of business, and etc.

In the "Intergovernmental Panel on Climate Change" advocated by the United Nations as a global issue, there is concern that climate change due to anthropogenic global warming will have even more serious effects in the future. In response to the Paris Agreement, Japan has set a target of reducing greenhouse gas emissions by 26% by 2030 and 80% by 2050 compared to 2013. In order to steadily promote this initiative and realize a "society that is sustainable, diverse and inclusive, with no one left behind", which is the goal of SDGs (sustainable development goals), it is required for companies to more effectively respond to climate change and carry out sustainable business activities.

KPMG Consulting has a wealth of experience in business transformation support, technology transformation, and risk consulting including BCP, and also supports the overseas expansion of many Japanese companies. On the other hand, Japan Weather Association has weather big data analysis technology cultivated for 70 years and has been carrying out highly accurate weather forecasts for domestic and overseas that have been the foundation of providing consultation services on the development of product demand forecasting business and environmental impact assessment. By utilizing the know-how cultivated in each area through this collaboration, we will be able to innovate our client’s business plans and models for both “mitigation” against climate change and “adaptation” aiming at risk reduction. Also, it will be possible to provide a wide range of consulting



services, including the sophistication of, and plan to provide more effective support to client companies.

[Provided services]

➤ Supply and demand forecast and operation optimization support

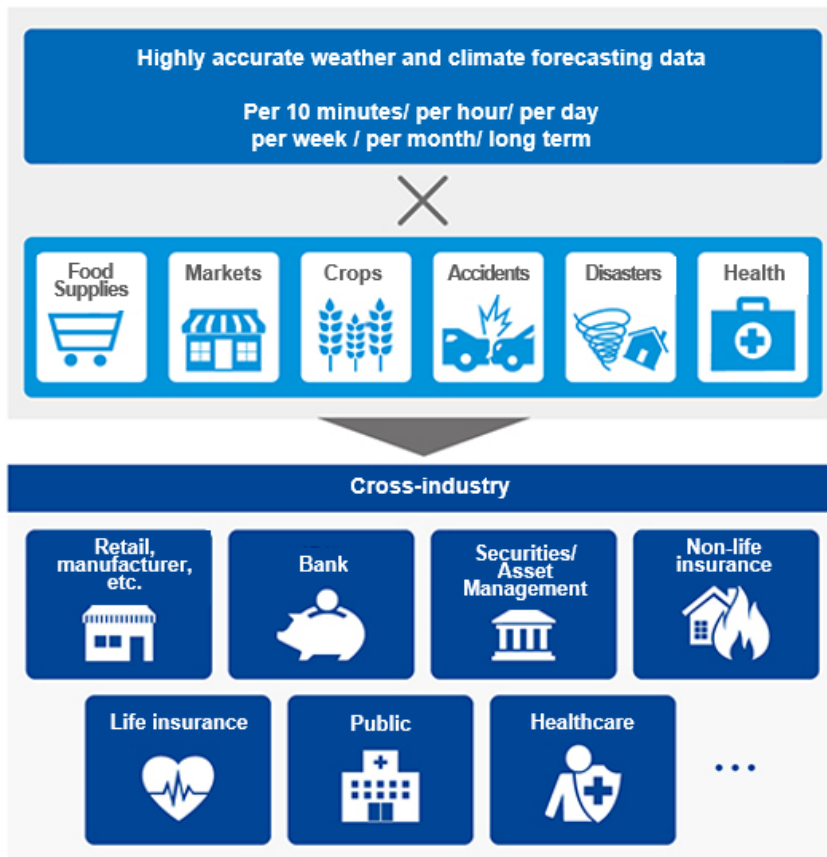
Utilizing KPMG's experienced consulting capabilities to product demand forecast based on highly accurate weather forecasts, which Japan Weather Association has many achievements, we support optimizing operations such as marketing plan optimization, production planning and supply chain optimization, and dynamic pricing mainly in the manufacturing industry, retailing business, restaurant business.

➤ Development support for financial products and services

Accurate and comprehensive/continuous/consistent weather and climate prediction data, financial data, and etc. are linked to aim for new climate change mitigation/adaptation in consideration of ESG (environmental, social, governance) investments. We support development of financial products and optimization of investment and investment operations. In addition, we will utilize the business of weather forecasting and climate change analysis for insurance companies and other financial institutions, such as information provision services for customers assuming weather related disasters and accidents, expansion of insurance products, and optimization of resource allocation such as insurance loss service.

➤ Emergency response based on early alert information and BCP sophistication support

Based on early and highly accurate weather disaster forecasts, we support strengthening the effectiveness of BCP (Business Continuity Plan) including emergency measures in companies. Prior to public information provided by the Japan Meteorological Agency, we will prepare a forecast for weather disasters such as floods for specific businesses. This will be able to develop an action plan in the event of an early disaster occurrence and mitigate or avoid damage at an early stage in case of an emergency.



There are numerous industries that need climate change mitigation and adaptation measures. We are expanding services across all industries, including finance, insurance, manufacturing, automobiles, pharmaceuticals/healthcare, energy, telecommunications/media, services, and the public sector, and are planning to expand overseas. Furthermore, by actively disseminating information on climate change through marketing activities such as joint seminars and lectures by both companies, we will raise environmental awareness not only for companies but also for individuals and society as a whole to mitigate future global warming.



### **About KPMG Consulting**

KPMG Consulting, a member firm of KPMG International Cooperative, is a consulting firm that provides services in three areas: business transformation, technology, and risk and compliance. Consultants well-experienced in strategy, BPR, HR/organization, PMO, outsourcing, governance/risk/compliance, and IT provide extensive services to financial, insurance, manufacturing, automobile, pharmaceutical, health care, energy, telecommunications, media, service, and public sector industries.

### **About Japan Weather Association**

Japan Weather Association, which was established in 1950, conducts corporate activities that contribute to the public through consulting businesses which related to weather forecast, including renewable energy, environmental impact assessment, air pollution analysis, and disaster prevention/mitigation, and safety management. In addition, we operate overseas businesses in 31 countries and regions that contribute to international cooperation and private investment through weather and hydrometeor consulting projects.