

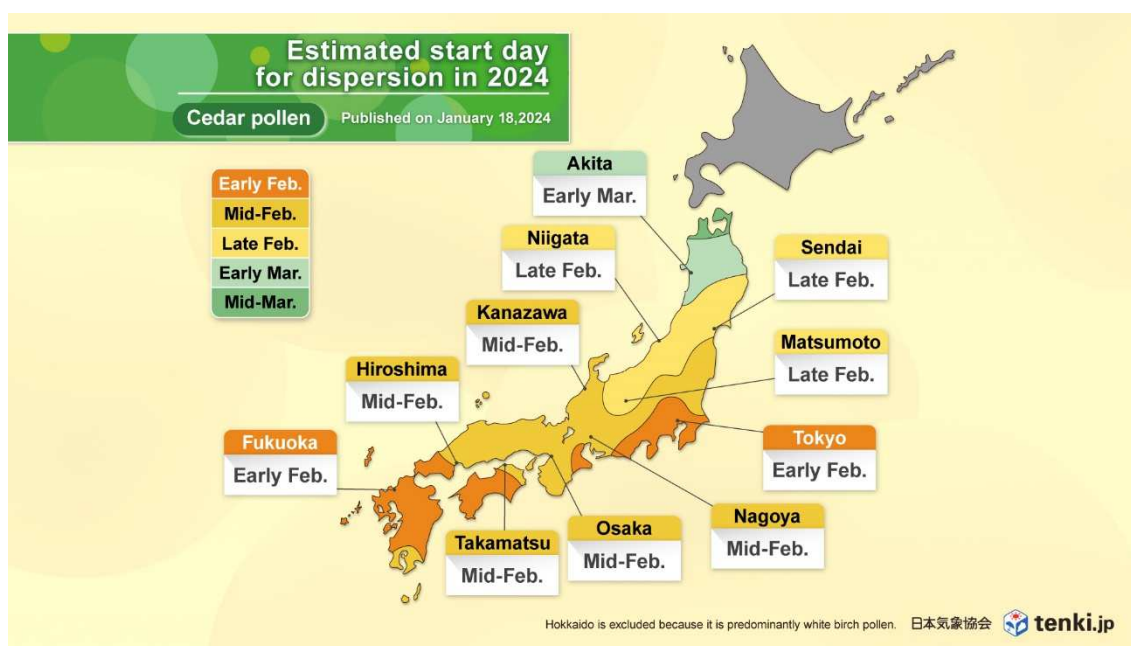
JWA 2024 Spring Pollen Dispersion Forecast (Part 1)

~The cedar pollen season to start soon, peaking from late February~

On January 18, 2024, Japan Weather Association (JWA) released its 2024 report on spring pollen dispersion forecasts by prefecture and at national level. Nation-wide forecasts of cedar and cypress pollen will be available excluding Hokkaido, while white birch pollen will be provided for Hokkaido. Detailed information will also be available for sale as '2024 Total Spring Pollen Dispersion Forecast'.

1. Start of Cedar Pollen Dispersion in 2024

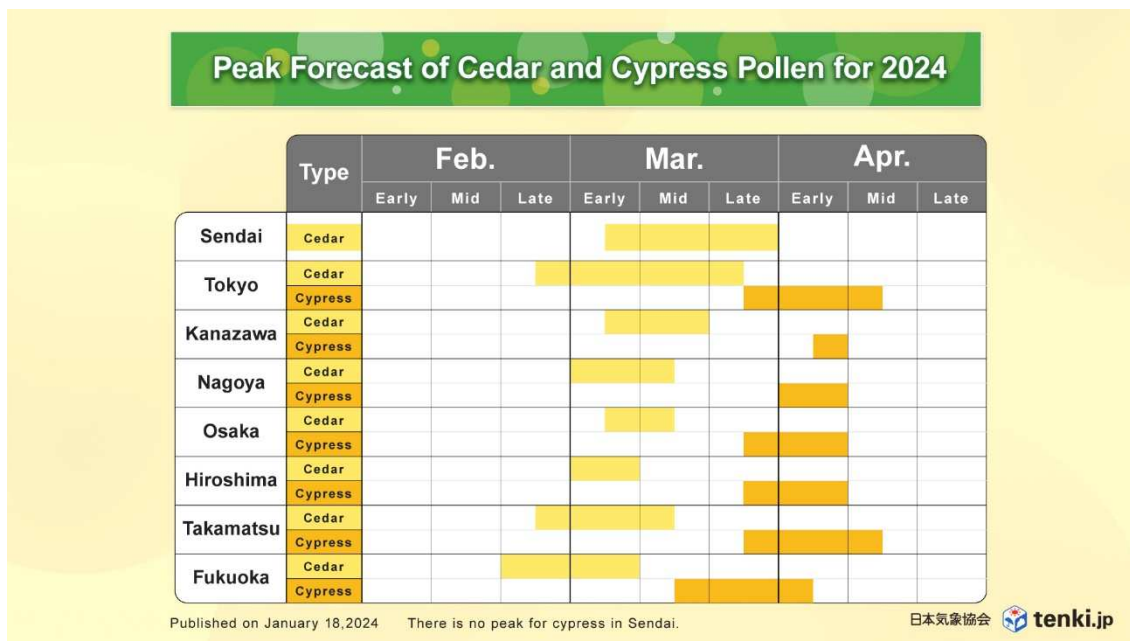
Cedar pollen is expected to start dispersing in early February in parts of Kyushu, Shikoku, Chugoku, Tokai, and Kanto-Koshin. Kinki is anticipated to start in mid-February, Hokuriku and southern Tohoku in mid to late February, and northern Tohoku in early to mid-March. The cedar pollen season is expected to commence either at the usual time or earlier than usual this year.



2. Peak Period of Cedar and Cypress Pollen

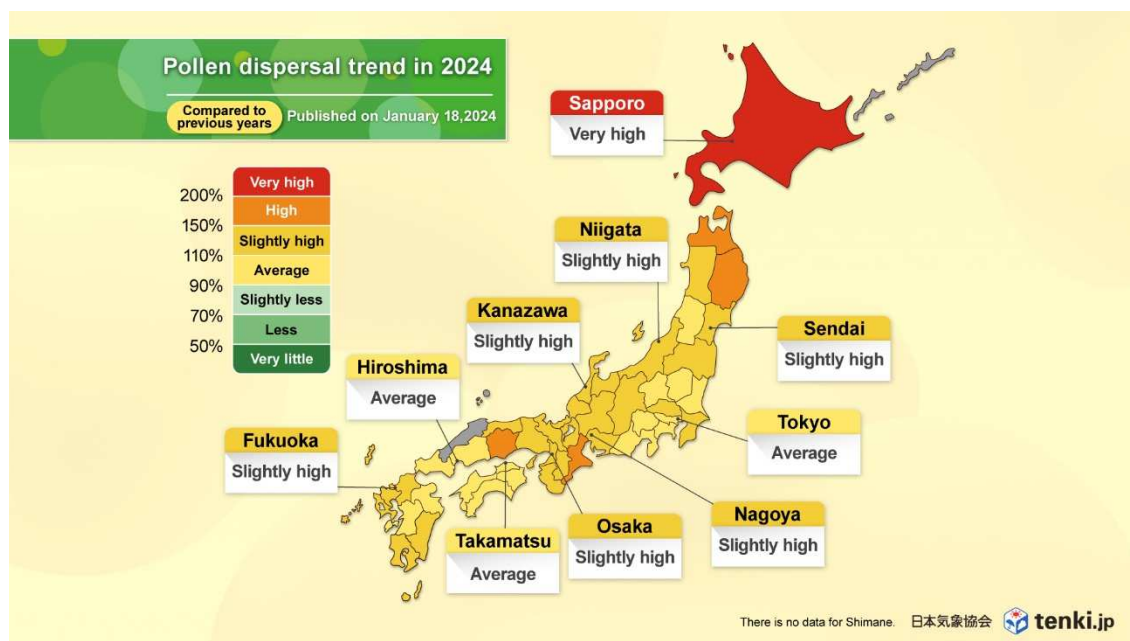
The peak dispersion period for cedar pollen is expected to start in late February in Fukuoka, Takamatsu, and Tokyo, while Hiroshima, Osaka, Nagoya, Kanazawa, and Sendai are likely to experience the peak in early March. The peak period is anticipated to last for approximately 10 days to a month. Additionally, the peak for cypress pollen is expected between late March and early April in many areas. Sendai is forecasted to have a lower volume of cypress pollen, with no clearly defined peak. Sudden warm and windy days, akin to the first spring gale, can

significantly increase pollen dispersion, potentially advancing the peak period. It is advisable to implement comprehensive pollen countermeasures well before the peak season begins.



3. Pollen Dispersal Amount in Spring 2024

In the spring of 2024, the dispersion of cedar and cypress pollen is expected to be generally similar to or slightly higher than the annual average over the past 10 years in most regions from Kyushu to Tohoku. Additionally, Hokkaido is anticipated to have a significantly higher white birch pollen dispersion.



Pollen Dispersal Forecast:

For more information on pollen dispersal forecast, follow the link below;

<https://www.jwa.or.jp/english/service/seasonal-news-pollen-dispersal-forecast/>

PLEASE REFRAIN FROM USING THIS INFORMATION FOR CORPORATE PURPOSES WITHOUT PERMISSION (QUOTATION IN PRESS RELEASES OR USE FOR PROMOTIONAL PURPOSES AMONG OTHERS ARE PROHIBITED).

For corporate use, including product PR, please contact us using the inquiry form provided in the link below.

<https://www.jwa.or.jp/english/contact/>

Originally released in Japanese: 2024/1/18