

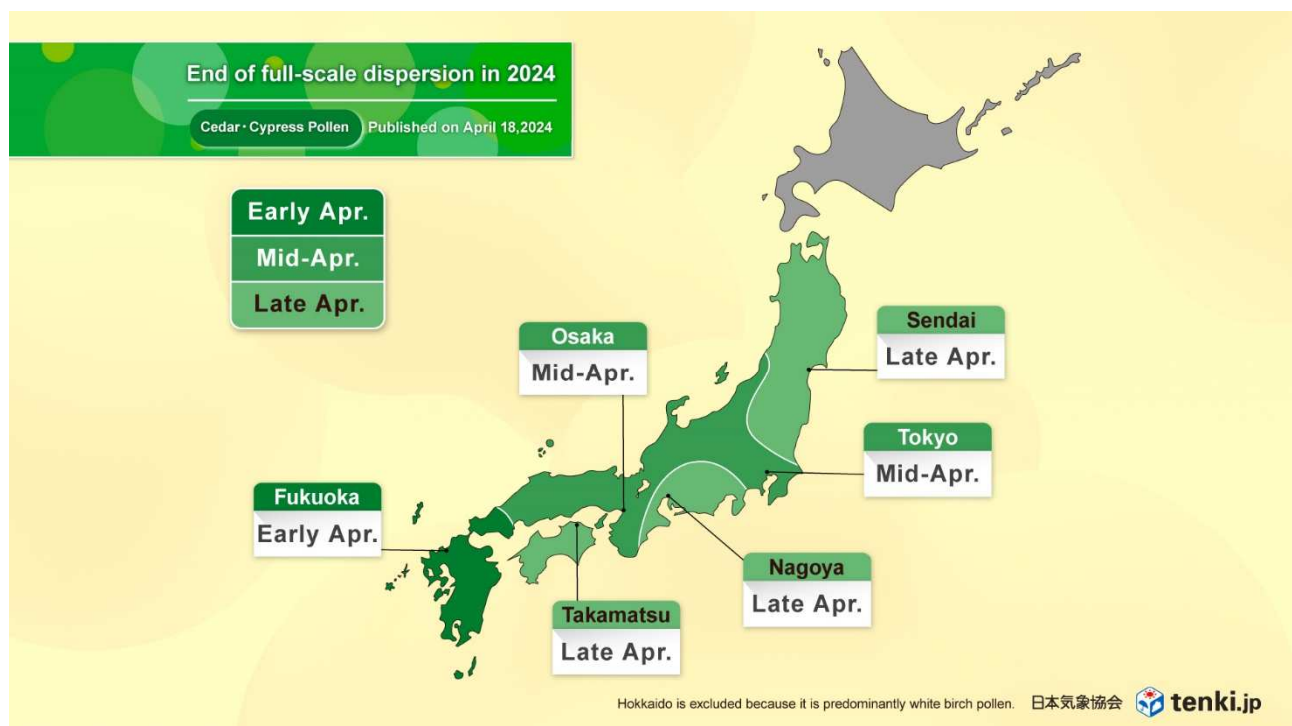
## JWA 2024 Spring Pollen Dispersion Forecast (Part 4)

Cedar and cypress pollen season to end soon,  
total amount of airborne pollen levels in Tokyo are normal for the year

On April 18, 2024, Japan Weather Association (JWA) released its 2024 report on spring pollen dispersion forecasts by prefecture and at national level. Nation-wide forecasts of cedar and cypress pollen will be available excluding Hokkaido, while white birch pollen will be provided for Hokkaido. This announcement marks the conclusion of providing pollen information for the 2024 season.

### 1. How Long will Cedar and Cypress Pollen last?

The cedar and cypress pollen season is coming to an end in April. The full-scale dispersion has already ended in Kyushu, and will soon conclude in Chugoku, Kinki, and Hokuriku regions, as well as in a wide area of Kanto Koshin. On the other hand, there are some locations in Shikoku, Tokai, and parts of Kanto Koshin to Tohoku observing high pollen levels in mid-April, and full dispersion is expected to continue until late April. Even after the full-scale dispersion, there may still be days with slight pollen dispersion in various regions until early May. Particularly on windy days, pollen dispersion tends to increase, so please take precautions for those who are sensitive to pollen.





## 2. Start of White Birch Pollen Dispersal in Hokkaido

White birch pollen in Hokkaido is expected to begin dispersing in late April. The start of white birch pollen dispersion in Hokkaido tends to occur earlier when temperatures are higher in spring (March to May). Although there were significant temperature fluctuations this March, the overall temperature remained normal. The temperatures in April have been above normal so far, and they are expected to remain normal or higher through May. As a result, the start of white birch pollen dispersal is likely to be either normal or earlier than usual. White birch pollen dispersion is expected to continue into May, with pollen levels likely to be significantly higher than usual. Those who are sensitive to pollen should take all possible precautions.

### Pollen Dispersal Forecast:

For more information on pollen dispersal forecast, follow the link below;

<https://www.jwa.or.jp/english/service/seasonal-news-pollen-dispersal-forecast/>

PLEASE REFRAIN FROM USING THIS INFORMATION FOR CORPORATE PURPOSES WITHOUT PERMISSION

(QUOTATIONS IN PRESS RELEASES OR USE FOR PROMOTIONAL PURPOSES AMONG OTHERS ARE PROHIBITED).

For corporate use, including product PR, please contact us using the inquiry form provided in the link below.

<https://www.jwa.or.jp/english/contact/>

Originally released in Japanese: 2024/4/18